



Montgomery Historical Society
P.O. Box 47/Montgomery, VT 05470

~ ~ ~

pratthall@gmail.com
montgomeryhistoricalsociety.org

Did you know Montgomery has three Historic Districts?...

...Forty years ago the State of Vermont's Division for Historic Preservation published their survey of Montgomery buildings. It was over 400 pages and identified 55 structures of potentially historic architectural significance and three areas of town as historic districts; Montgomery Village, Montgomery Center, and the West End of Montgomery Center. This was part of an effort by the State to document buildings in every town and city, a statewide inventory of potentially significant historic architecture.

These designations were meant to establish a baseline with as much information as possible. It carried no restrictions on owners. In some cases it incentivized preservation and at the very least hoped to foster an appreciation of these areas and individual structures.

The following page shows the approximate boundaries of the three Montgomery districts overlaid on Google Earth photos. The full report is now available on the MHS website at:

<https://www.montgomeryhistoricalsociety.org/pdf/historicsitessurvey.pdf>

Once upon a time 50 years ago...

...A "foreboding" sign was nailed to the front of St. Bartholomew's, "UNSAFE FOR VISITORS". A small group of people disagreed and with its preservation in mind met in August and September and formed the Montgomery Historical Society. The first meeting was just 5 people, Irene Scott, Margaret St. Onge, Larry Pratt, Beatrice Chaffee, and Sharon Devries according to the minutes. Just a few weeks later officers were elected. Bylaws were drafted and approved by the Board by the end of October and the first fundraising letter went out to the community in November.

In January of 1974 the Society had 124 "adult members", 2 business members, and \$502.02 in the bank. They purchased the building for one dollar. Thus began a fifty-year odyssey to restore and preserve the building, open the property to community use, begin recording the Town's history, and award small scholarships all without any direct taxpayer support. It has been, and remains, a labor of love from everyone involved, benefiting our community and State. We cannot begin to thank the countless individuals, businesses, and organizations who have helped along the way.

On this, our fiftieth anniversary, we hope to put COVID behind us and exceed our goal of 200 memberships, adults or otherwise! If you aren't a member, please consider joining us, it's an opportunity to make a local impact and no donation is too small.

<https://www.montgomeryhistoricalsociety.org/mhsdonor.html>

Two MHS Scholarships available every year...

...for any graduating Montgomery Senior going on to college or additional technical or professional training. Applications available for download at

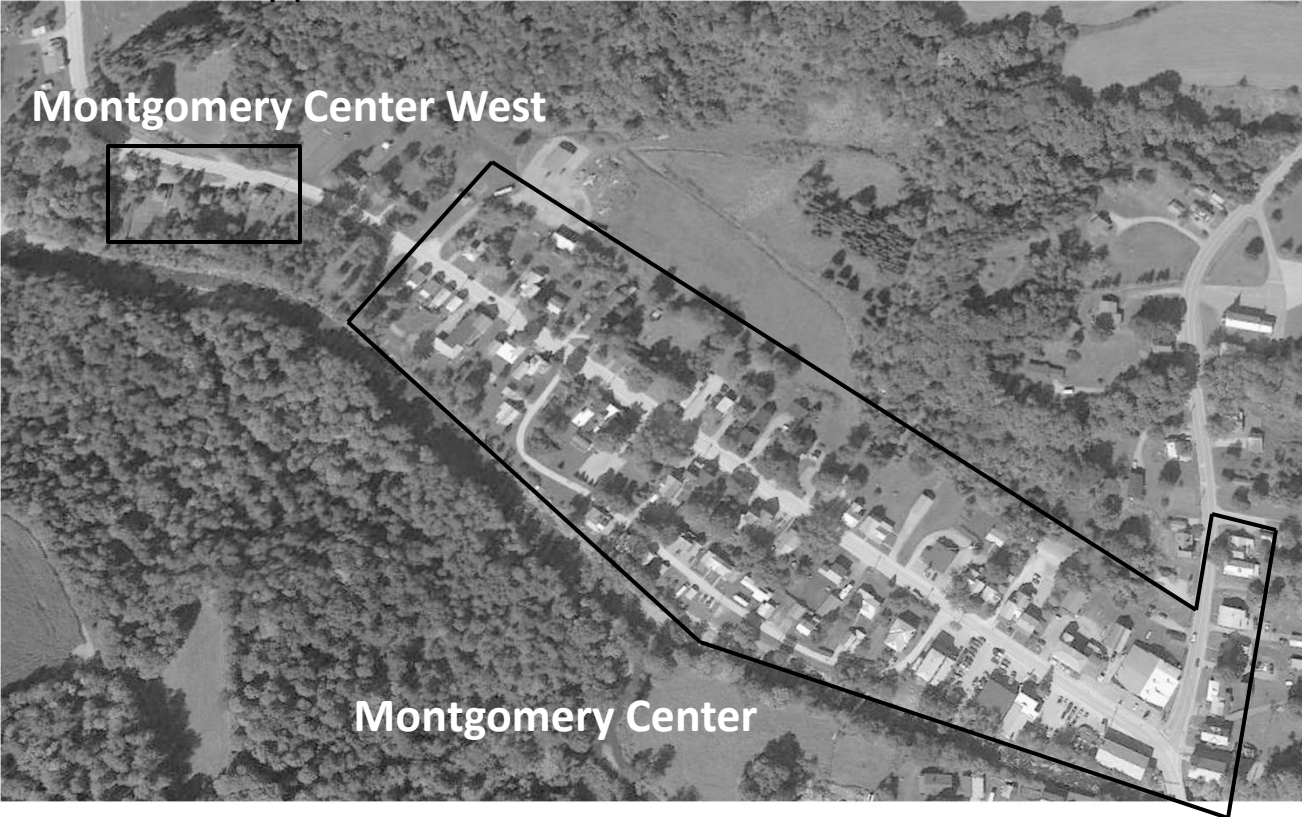
<https://www.montgomeryhistoricalsociety.org/pdf/mhsscholarships.pdf>

The Montgomery Historical Society Board is:
John Beaty, Patrick Calecas, Bob Cummins, Marijke Dollois, Pat Farmer, Mary Garceau
John Kuryloski, Roger Lichti, Bill McGroarty, Patty Perl, Scott Perry, Elsie Saborowski, & Sue Wilson
The MHS is a 501.c.3 member funded non-profit.

Approximation of Village Historic District



Approximation of Center Historic Districts



Montgomery Center West

Montgomery Center